



baja designs[®]
THE SCIENTISTS OF LIGHTING

2025-On Polaris RZR Pro R Hood Kit

(44-8299, 44-8300, 44-8301, 44-8302)



2950 Norman Strasse San Marcos, CA 92069 Phone 760-560-2252 X3 • Fax 760-560-0383 info@bajadesigns.com •

www.bajadesigns.com

LIMITED LIFETIME WARRANTY

Baja Designs proudly offers a LIFETIME WARRANTY against manufacturer's defect on all the products that we manufacture.

These are comprehensive warranties; other than the exclusions below – you're covered. If your LED or HID bulb burns out, you're covered. Additionally, cutting off our connector or changing your lenses does not automatically void your warranty.

Exclusions: Installation errors, abuse, misuse, or crash damage. You must be the original owner of the product and can supply proof of purchase.

Baja Designs manufactures its own products as well as resells products manufactured by others. Baja Designs makes no express or implied warranties on products not manufactured by Baja Designs including without limitation any warranties or merchantability and fitness for a purpose. We will, however, pass on all warranties made by the manufacturer, who has sole responsibility for performing such warranties. Baja Designs will pay the freight if your product is less than 90 days old, otherwise defective products must be returned to Baja Designs, Inc., freight prepaid. At our option, we will repair or replace items in question and return them at no charge. If the identical product is no longer available, we will replace it with a similar product of equal value. Baja Designs Inc. will not be responsible for any indirect or consequential damages in connection with defective merchandise. Items purchased through a Baja Designs authorized dealer must be returned through the dealer. Only available on LED auxiliary lights and product must be in sellable condition at MSRP. Product that has been damaged in any way after the original purchase date will be excluded from this guarantee.

Indemnification: Buyer hereby acknowledges off-roading, racing and driving at night are dangerous activities and that the products and/or supplies purchased from Baja Designs are used in an inherently dangerous activity that may endanger life and limb; and in no event shall the seller, or seller's heirs and assigns, be held liable for consequential damages, nor shall seller's liability on any claim for damages arising out of or connected with the sale, delivery, or use of purchased products and/or supplies exceed the purchase price of the products and/or supplies. Buyer is responsible for ensuring that it uses the products (and its vehicle) in accordance with all applicable laws, regulations, guidelines, and standards of care. Buyer acknowledges that some products may only be used when off-roading, and

Buyer will comply with all vehicle and road safety guidelines. Buyer is solely responsible for (and will indemnify and hold Bestop harmless for) any claims, losses, damages, fines, fees, costs, or other amounts arising out of Buyer's non-compliance with these provisions.

Required Tool(s)

- T-40 Torx
- 7/16" socket
- 4mm, 5mm Hex bit



(70-1003) (QTY: 1)

S8, 10" Driving/Combo LED Light Bar



(45-1003) (QTY: 1)

OnX6+, 10" Driving/Combo LED Light Bar



(44-9343) (QTY: 1)

2025 Polaris Pro-R 10" S8 Hood Bracket
DS

(44-9344) (QTY: 1)

2025 Polaris Pro-R 10" S8 Hood Bracket
PS



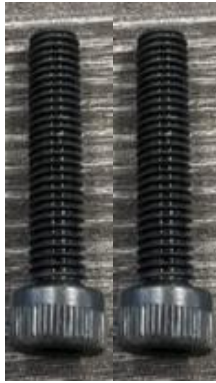
(44-9345) (QTY: 1)

2025 Polaris Pro-R 10" OnX6 Hood
Bracket DS



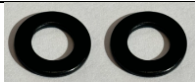
(44-9346) (QTY: 1)

2025 Polaris Pro-R 10" OnX6 Hood
Bracket PS



(20-1649) (QTY:2)

Hardware, Screw, Socket Head, Alloy Steel, Black-Oxide, M6 x 1 mm Thread, 30 mm Long



(20-1027) (QTY:2)
M6 Washer, Black



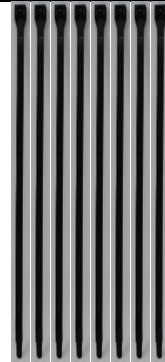
(64-0300) (QTY:1)

Wiring Harness, Pulse Bar 40 Amp OnX6 and S8 Roof Kit Harness



(64-0177) (QTY: 1)

Wiring Harness, S8, Backlit Add-On



(20-1612) (QTY: 8)

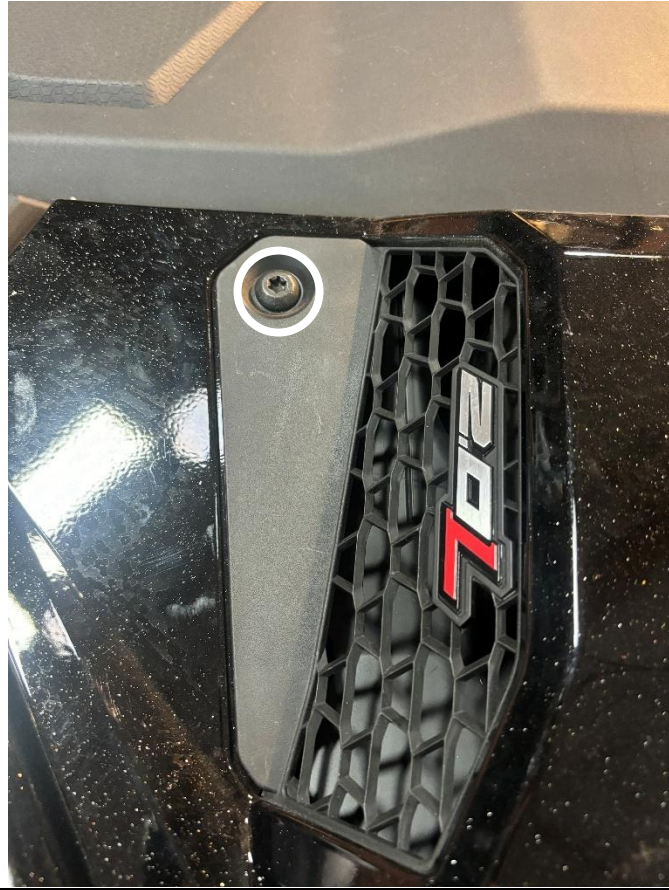
Hardware, Zip Tie 50lb 8"

BOX SIZE: 20x8x8

To begin, make sure the vehicle is in park, on level ground and the parking brake is engaged.

Step 1: Removing Hood cover

Using a T40 Torx, remove the 2 hood bolts (circled) securing the central hood panel.

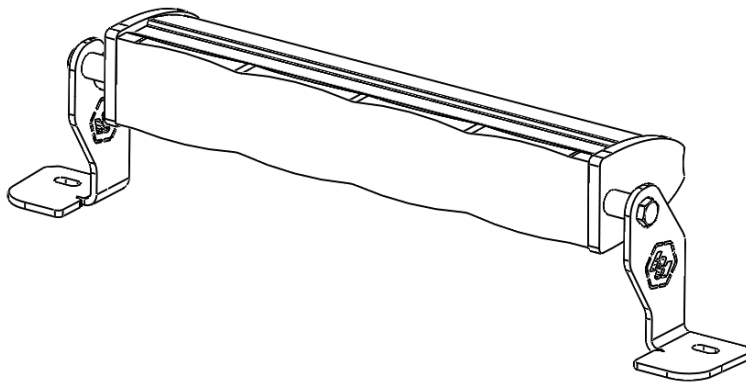


Step 2: Mount brackets to light

Using a 7/16" socket and parts bag included with the lights, attach the vehicle specific brackets to the light. Leave the brackets loose to allow for easy adjustment.

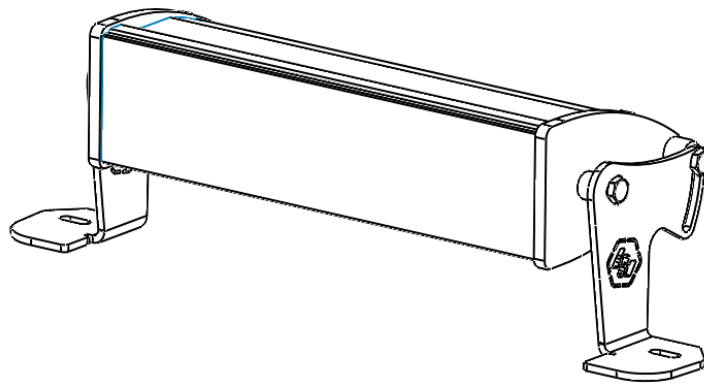
For S8 10"

Use brackets **44-9343** for Driver side and **44-9344** for Passenger side.



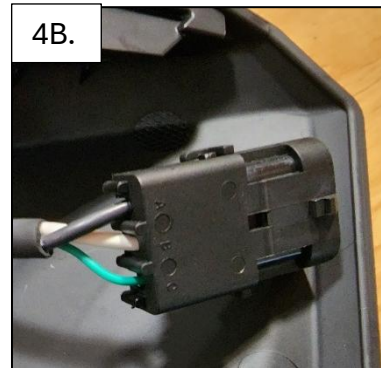
For OnX6 10"

Use brackets **44-9345** for Driver side and **44-9346** for Passenger side



Step 3: Route power cable

Wrap the light in a towel to protect it. Route the light power cord with three exposed pins through the passenger side hood grill and towards the front of the vehicle (4A brackets removed for clarity). Locate the included weather pack connector and open the clamp. Plug the black wire into slot A, white wire into slot B, and green wire into slot C. Close the clamp and ensure to not pinch any wires.



Step 4: Remove storage compartment

Open the dash center console and remove the console insert. Use 4mm hex bit to remove the two screws. To take the storage compartment take the gromet and USB out first. Take the storage compartment out.



Step 5: Pulse bar connection

Locate the pulse bar and remove one of the pulse bar caps. Plug in the included wiring harness pulse bar connector to the slot.



Step 6: Route the Rocker switch

Locate the rocker switch on the wiring harness (**64-0300**), take a photo of the wiring and unplug the spade connectors. Push the wires from underneath the pulse bar mounting and take it near the rocker switch punchouts.



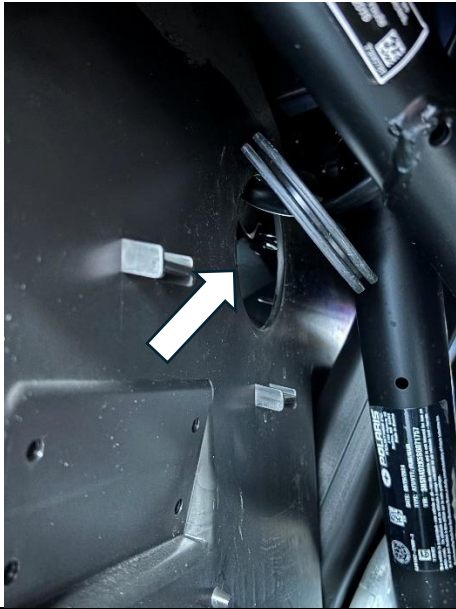
Step 7: Rocker switch installation

Push the punch out from the desired location for the switch. Run the switch wires from that punch out window. Plug in the switch wires following the reference photo and push the switch into the dash.



Step 8: Route harness connector

Route the harness connector through the dash access hole on passenger side footwell and into the CVT cooler intake compartment. Plug the harness connector into the light.



Step 9: Install the hood panel

Align the light brackets with the bolt hole and mount them with the included bolts (**20-1649**) and an additional washer (**20-1027**) using the 5mm Hex bit.

OnX6



S8



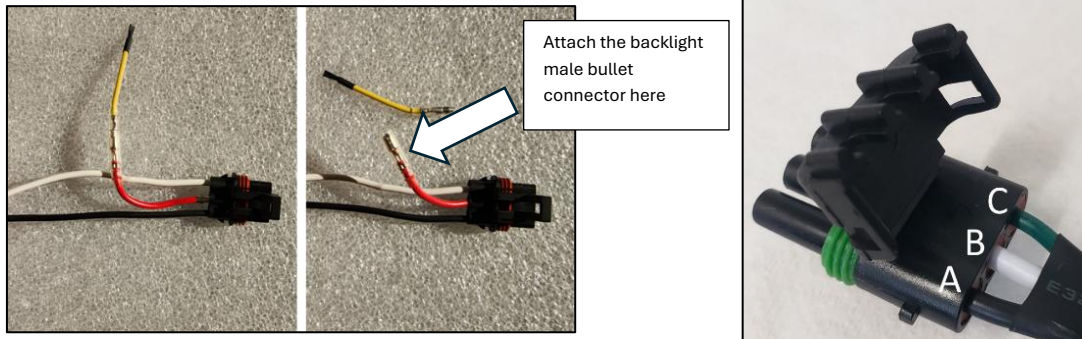
Step 10: Test lights

Test the light to ensure it works.

For S8 Backlight

A1. Locate the 2" wire with a male bullet connector. Remove and discard it. Attach the S8 backlight harness (64-0177) male bullet connector to the wiring harness female bullet connector.

A2. Run the backlight wire with the main wiring harness to the light. Open the main harness connector's lock and insert the wire terminal into slot C (shown in photo A2). Make sure the wire terminal clicks into place and close the connector lock.



Tie all wires away from sharp, hot, and/or rotating components.

Re-torque all the fasteners after 100 miles.

Your install is now complete! Thank you for choosing Baja Designs.